



ANAFE: From Agroforestry to Integrated Land-Use Education

S. Chakeredza
ANAFE Network Manager



Outline

- Background to ANAFE
- Activities
- Contributions to Capacity Strengthening
- Ongoing Projects
- Moving Ahead
- Conclusion

Background to ANAFE

Establishment

- Established in 1993 by 29 tertiary agricultural institutions with assistance of ICRAF

Membership

- As of 2009, 131 member institutions in 35 African countries

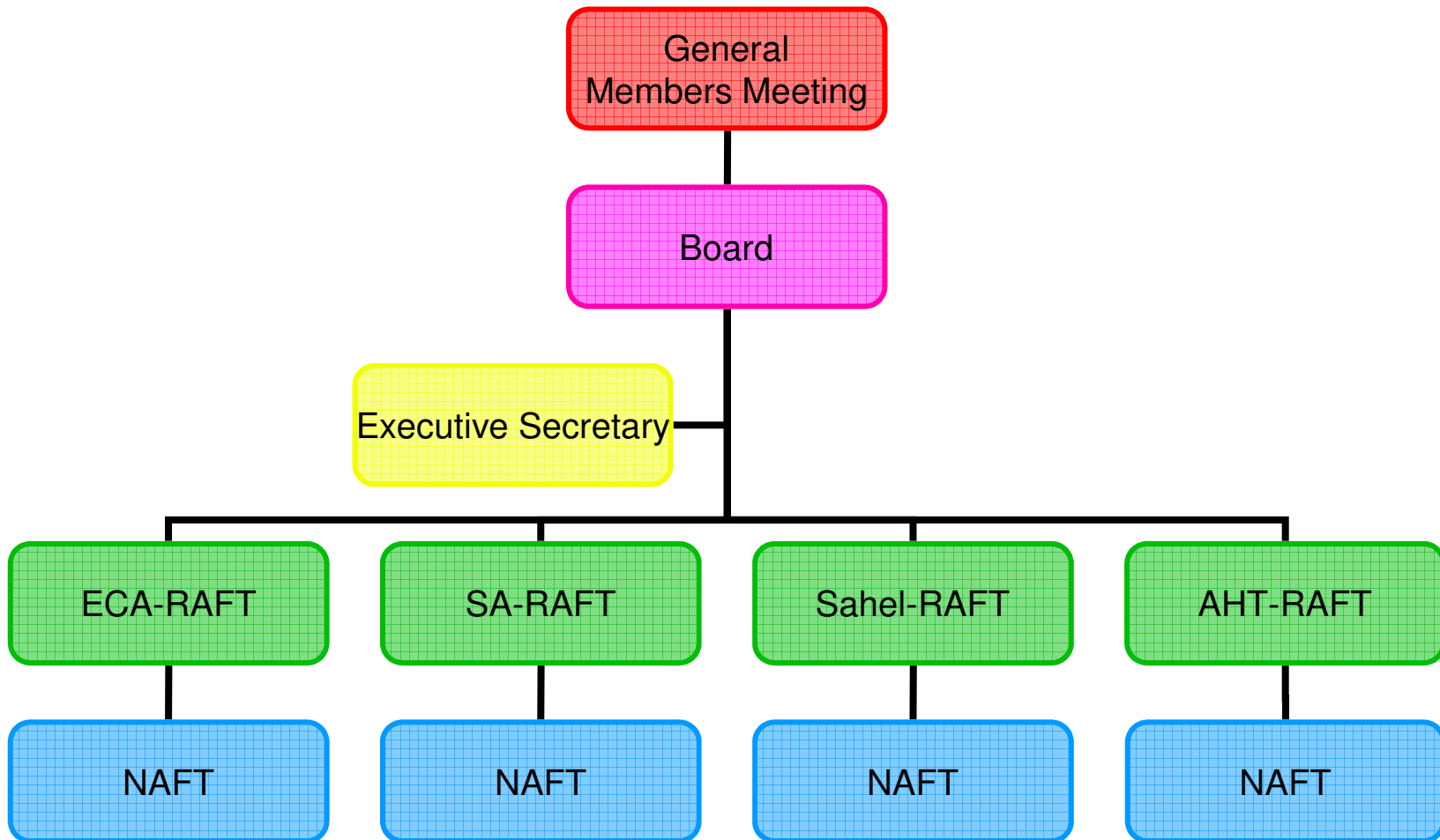
1993-2003

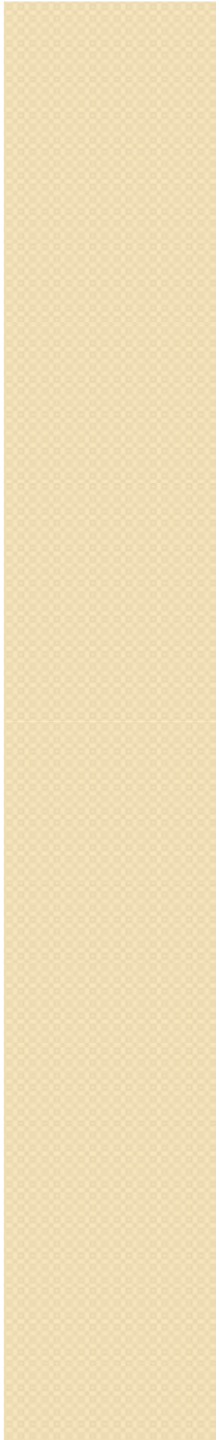
- Mission was to “promote Agroforestry Education”

2003- Present

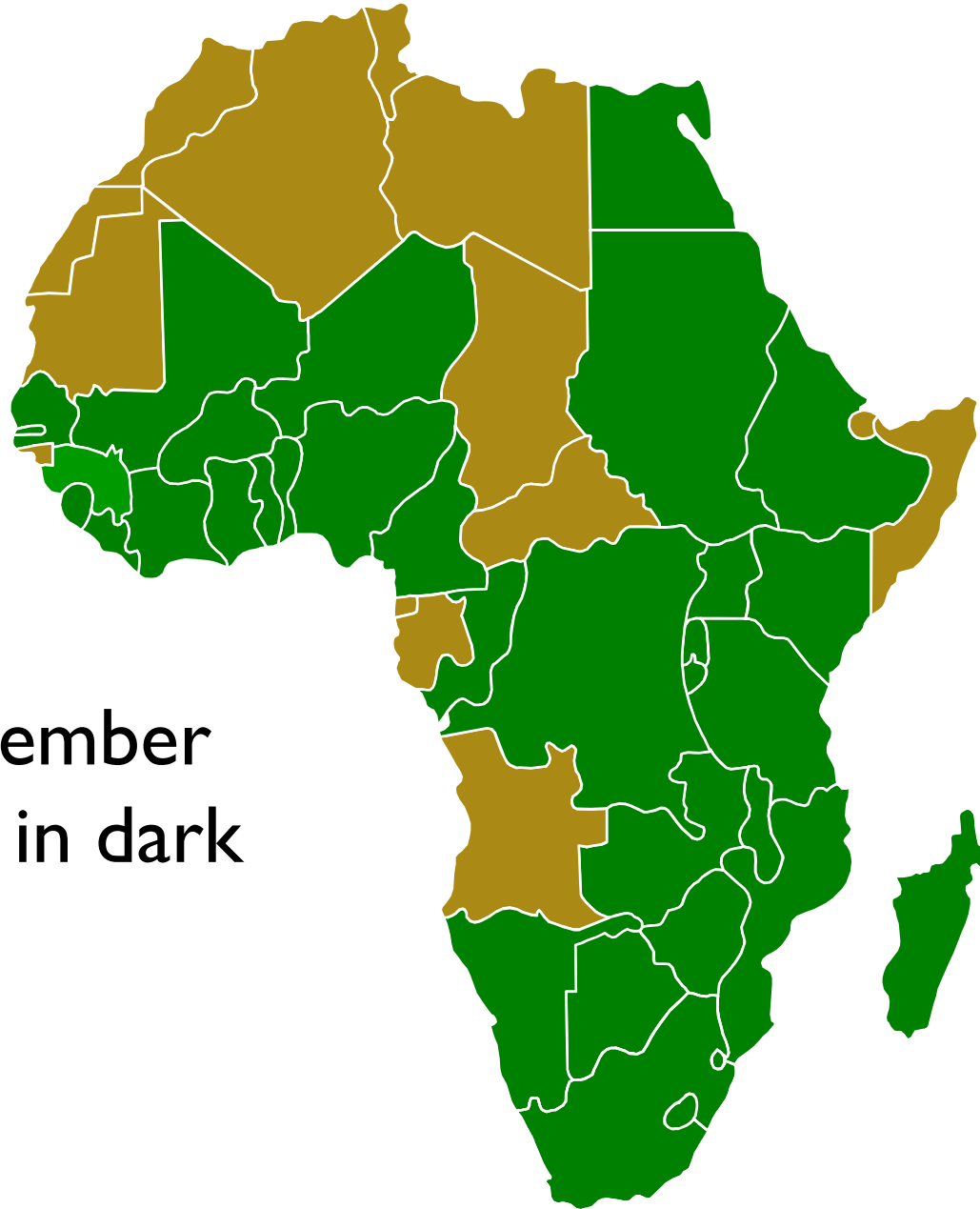
- Mission is “to improve the quality, relevance and application of agricultural education in Africa”

Organisational Structure

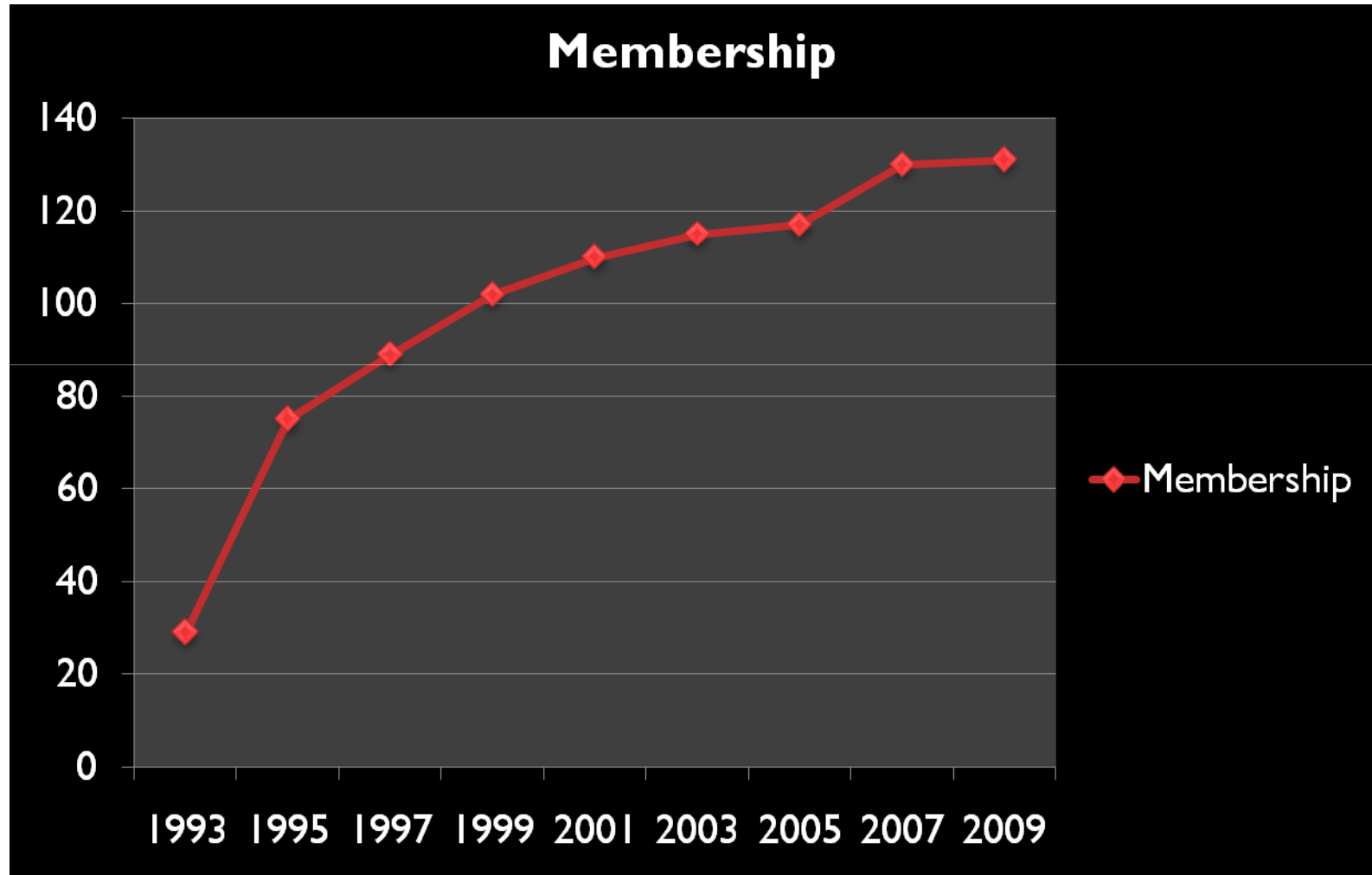




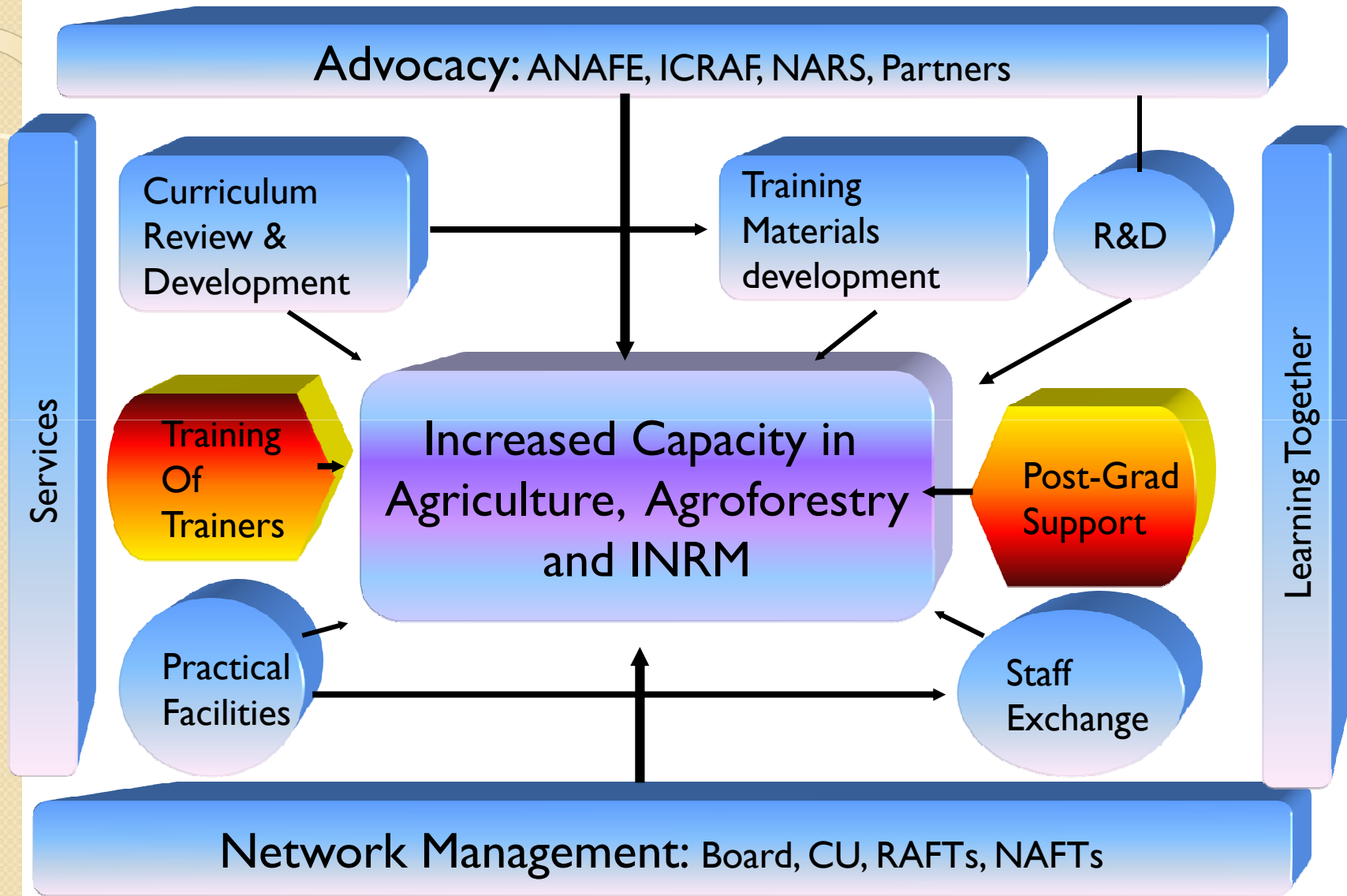
ANAFE Member
Countries in dark
green



Growth in ANAFE Membership



ANAFE Activities



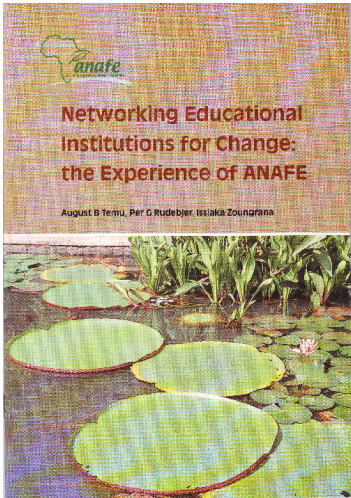
Contributions to Capacity Strengthening (2003-2009) selected areas

Item	Contributions
Manuals Developed	10
Learning Materials Developed	13
Farmer Learning Resource Centres	4 centres established
Curriculum Guidelines	5
Thesis Research Support	148 (80M; 60F); 35 Universities; 19 countries
Training on effective teaching and learning methods	7 courses; 136 teachers
Students and Faculty exchanges	19 lecturers; 68 students
Post-graduate training review recommendations	1 study for the whole SSA conducted
Farmers of the Future Activities	10 schools currently testing materials
Demonstration Plots	25 established



Information Sharing

- Dedicated Website <http://www.anafeafrica.org>
 - Downloadable training materials
- Dynamic Database
 - Joint research
 - Students and staff exchange
 - Sharing research facilities
 - External examiners
 - Sabbatical leave contacts
- Proposal writing
- Directory of Funding
- Newsletters/Meetings



*Network
Management*



*Tuning educators to
respond to development
needs*



*Analysing and understanding
education systems and
institutions*

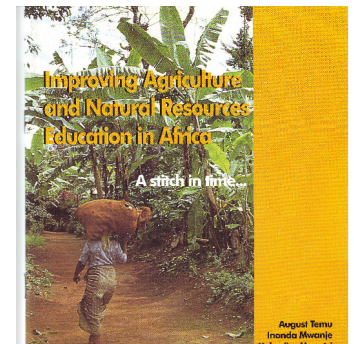
**Strengths of ANAFE Platform:
Innovation, Learning,
Transformation**

*Writing and reviewing
learning materials*

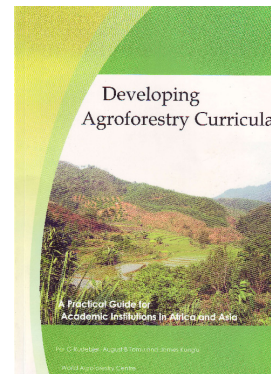
*Developing
strategies for
capacity
building*



*Reviewing and developing
curricula in the areas of
agriculture and Natural
Resources*



*Convening
International
Fora*



Ongoing Projects

ANAFE / AAU

- Development of Contextualized Learning Materials

ANAFE / FAO

- Revitalizing Forestry Education

ANAFE / ICRAF

- Readiness for e-Learning

ANAFE / FARA /
SADC

- Strengthening Capacity for Agricultural Research and Development in Africa

ANAFE

- Strengthening Africa's Strategic Agricultural Capacity for Impact on Development (SASACID)

ANAFE/AFOLM

- Curriculum Review and Development????

Moving Ahead: Restructuring ANAFE

Growth

- To build on its growth and success over the years

Independence

- To be a fully independent African Network

Ownership

- To empower member institutions to own the network

Integration

- To reflect the focus on land-use disciplines



Selection of Focal Institutions

- The process will be through competitive bidding
- Only member institutions from a given region will be eligible to participate
- Potential Focal Institutions should demonstrate transparent pass-through of funds
- A representative committee will finalize selection of Focal Institutions



Embracing Emerging Opportunities

- **Competitive:** Managing a very large variation among membership (policy; institutional setting; language; resources)
- **Relevant:** Managing a tough and evolving agenda
- **Effective:** Network membership being held at institutional level
- **Efficiency:** Securing a sustainable funding resource base
- **Long-term:** Managing leadership turnover, particularly at institutional level



Conclusion

- ANAFE is one of the largest working networks of tertiary agricultural institutions in Africa
- Over the years it has presented a platform for innovation, learning and transformation
- Change in focus from AF to Agriculture and NRM has enlarged opportunities for collaboration and partnership
- The focus now is to enhance greater ownership of the network by the members